

# COBRA

**Fortis Cylinder Mower**

**Powered by EGO Power+ 56V Battery**

**MODELS: FORTIS 14E, 17E, 20E, 20FTE, 25FTE, 25E**

## **OPERATOR'S MANUAL**



**Cobra Garden Machinery**

Henton and Chattell Ltd., London Road, Nottingham NG2 3HW UK

[www.cobragarden.co.uk](http://www.cobragarden.co.uk)

 **WARNING:**

For your own safety please read this manual before attempting to operate your new unit. Failure to follow instructions can result in serious personal injury. Spend a few moments to familiarise yourself with your mower before each use. Keep this manual in a safe place, so that the information is available at all times. If you give the equipment to any other person, hand over these operating instructions and safety regulations as well.

**Intended use:**

The equipment may only be used for the tasks it is designed to handle. Any other use is deemed to be a case of misuse. The user/operator and not the manufacturer will be liable for any damage or injuries of any kind caused as a result of this.

The cylinder mower is intended for use in home gardening as well as fine turf sports field environments.

The operating instructions as supplied by the manufacturer must be kept and referred to in order to ensure that the cylinder mower is properly used and maintained. The instructions contain valuable information on operating, maintenance and servicing conditions.

Important! Due to the high risk of bodily injury to the user, the cylinder mower may not be used to trim bushes, hedges or shrubs, to cut scaling vegetation, planted roofs, or balcony-grown grass, to clean (suck up) dirt and debris off walkways, or to chop up tree or hedge clippings. Moreover, the cylinder mower may not be used as a power cultivator to level out high areas such as molehills.

For safety reasons, the cylinder mower may not be used as a drive unit for other work tools or toolkits of any kind.

## CONTENTS

SECTION 1	SYMBOLS MARKED ON THE PRODUCT.....	4
SECTION 2	GENERAL SAFETY RULES.....	5
SECTION 3	PARTS DESCRIPTION.....	7
SECTION 4	ASSEMBLY.....	8
SECTION 5	PREPARING FOR USE.....	12
SECTION 6	OPERATION INSTRUCTIONS.....	12
SECTION 7	SAFETY CHECKS, SERVICE & MAINTENANCE.....	21
SECTION 8	CHANGING THE CARTRIDGE CASSETTE.....	21
SECTION 9	FAULT DIAGNOSIS & REMEDY.....	23
SECTION 10	TECHNICAL DATA.....	23
SECTION 11	WARRANTY.....	24
SECTION 12	EC-DECLARATION OF CONFORMITY.....	25

## 1.SYMBOLS MARKED ON THE PRODUCT

### WARNING:

For your own safety please read this manual before attempting to operate your new mower. Failure to follow instructions can result in serious personal injury. Spend a few moments to familiarise yourself with your mower before each use.

### Symbols and Warnings

---



Read the instruction handbook and follow all warning and safety instructions. Before any use, refer to the corresponding paragraph in the present manual.



Warning: Safety information about hazards that can result in personal injury.



Danger or injury from flying parts! Never point the discharge area towards bystanders. Always maintain a sufficiently safe distance. Be careful to prevent debris, such as stones or twigs being thrown from the mower.



Do not use on hills above 22° .



Stop the mower before cleaning of work area.



Warning: The blade is sharp, do not touch the blade.



Do not place hands or feet into the cutting unit. Do not touch rotating parts.



Warning: Always use correct tools and original spare parts.




KEEP HANDS AND FEET AWAY.

## **WARNING:**

Keep the safety signs clear and visible on the equipment. Replace the safety signs if they are missing or illegible.

## **2. GENERAL SAFETY RULES**

---

 **WARNING:** When using the cylinder mower, basic safety precautions, including the following, should always be followed to reduce the risk of serious personal injury and/or damage to the unit. Read all these instructions before operating this product and retain these instructions for future reference.

### **Training**

1. Before using the cylinder mower read the instructions carefully. Familiarise yourself with the controls and pay particular attention in learning how to stop the mower in an emergency.
2. Never allow children or people unfamiliar with these instructions to use the cylinder mower. Local regulations can restrict the age of the operator.
3. Never mow while people, especially children or pets are nearby.
4. Never use the mower if the operator is taking medicine or substances that could affect or impair his ability to react or concentrate.
5. Keep in mind that the operator or user is responsible for accidents or hazards occurring to other people or their property.
6. The operators must receive proper training in the use, adjustment and operation of the machine, including prohibited operations.

### **Before you start**

1. While mowing, always wear substantial footwear and long trousers. Do not operate the cylinder mower when barefoot or wearing open toed sandals.
2. Thoroughly inspect the area where the cylinder mower is to be used and remove all objects, such as stones, toys, sticks and wires, which can damage or be thrown by the machine.
3. Before using, always visually inspect to see that the blade, blade bolts and cutter assembly are not worn or damaged. Replace worn or damaged blades and bolts in sets to preserve balance

### **Operation and Caution**

1. Mow only in daylight or in good artificial light.
2. Avoid operating the equipment in wet grass, where feasible.
3. Always be sure of your footing on slopes or wet grass
4. Walk, never run, always be in control of the lithium cylinder mower and never allow yourself to be pulled along.
5. For cylinder mower, mow across the face of slopes, never up and down.
6. Exercise extreme caution when changing direction on slopes.
7. Do not mow excessively steep slopes of more 20°
8. Use extreme caution when reversing or pulling the cylinder mower towards you.
9. Stop the blade if the cylinder mower has to be tilted for transportation when crossing surfaces other than grass, and when transporting the cylinder mower to and from the area to be mowed
10. Switch on the cylinder mower according to instructions and with feet well away from the blades, disengage all blade and drive clutches before starting the motor
11. Always wear gloves if carry out maintenance near the sharp blades.
12. Be careful during adjustment of the cylinder mower to prevent entrapment of the feet and hands between moving blades and fixed parts of the cylinder mower
13. Never operate the cylinder mower with defective guards, or without safety devices, for example deflectors and/or grass catchers, in place.

14. Keep your feet well away from the blade when starting the mower and in accordance with the instructions.
15. Do not tilt the cylinder mower when starting or switching on the motor and always start on a flat surface free from long grass.
16. Caution: The cylinder mower shall not be operated without either the entire grass catcher or self-closing discharge opening guard in place.
17. Do not start the cylinder mower when standing in front of the discharge area.
18. Never put hands or feet near or under rotating parts while the cylinder mower is being operated. Keep clear of the discharge opening at all times.
19. Always ensure the cylinder mower is fully switched off before picking up/carrying the mower.

### **Remove starting key and Batteries**

1. Whenever you leave the cylinder mower
2. Before clearing a blockage
3. Before checking, cleaning, or working on the cylinder mower
4. After striking a foreign object, inspect the cylinder mower for damage and make repairs as necessary
5. If the cylinder mower start to vibrate abnormally(check immediately)
6. When in storage or being folded for storage
7. Before transporting the cylinder mower

### **Maintenance and Storage**

1. Keep all nuts, bolts and screws tight to be sure the cylinder mower is in a safe working condition.
2. Check the grass catcher and deflector frequently for wear or deterioration.
3. Replace worn or damaged parts for safety. Genuine parts should always be used as parts of inferior quality can damage the cylinder mower and compromise safety.
4. If the blade needs to be removed, wear strong gloves to prevent injury to hands and fingers. Check the blades balance after sharpening.
5. Carefully clean the mower and grass bag after use to remove debris as this can damage and corrode.

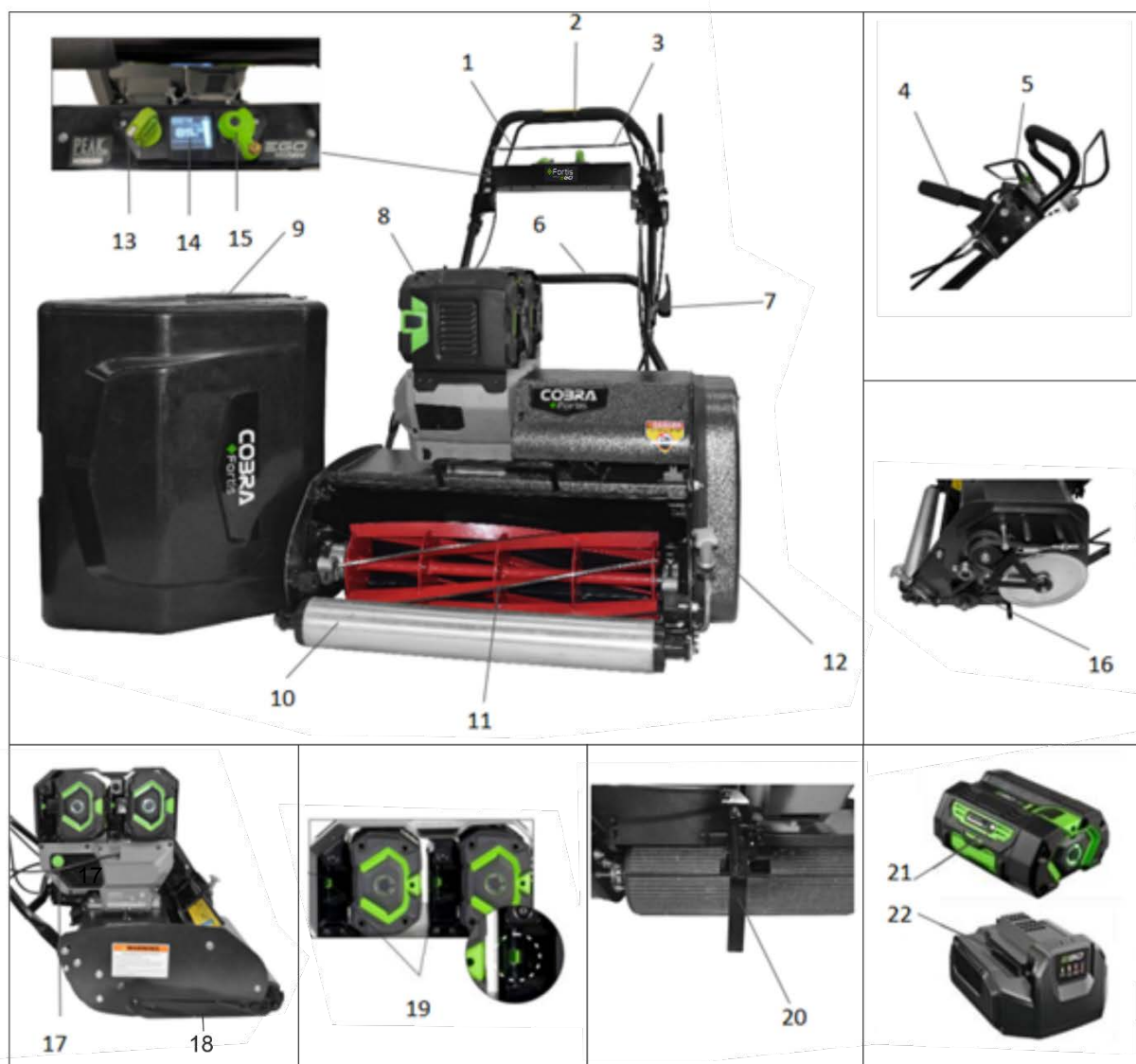
### **Fertilisers and top dressings are particularly corrosive.**

6. In time your chassis may peel because of the abrasive action of the debris making contact. This can be remedied by touching up paintwork where necessary to prevent corrosion.
7. Improper maintenance, use of non-conforming replacement components, or the removal or modification of safety components can damage the cylinder mower and injure the operators seriously.
8. Only use the recommended blades and spare parts by the manufacturer. The use of non-genuine parts can damage the cylinder mower and injure the operators. Keep the cylinder mower in good working condition.
9. If the blade stopping device doesn't work, please contact service centre for help.

 **Warning: Do not touch a rotating blade.**

### 3. PARTS DESCRIPTIONS

Notice: the illustrations may vary from your present model (Fig.2)



- |                       |                           |                           |                             |
|-----------------------|---------------------------|---------------------------|-----------------------------|
| 1. Drive clutch lever | 7. Release for handle     | 13. Key                   | 19. Battery release hole    |
| 2. Upper handle       | 8. EGO Power unit         | 14. LED screen            | 20. Tilt protection bracket |
| 3. Blade clutch lever | 9. Grass box collector    | 15. Speed control lever   | 21. EGO battery             |
| 4. Park brake lever   | 10. Front roller          | 16. Left foot protection  | 22. EGO charger             |
| 5. Blade safety lever | 11. Cutting cylinder      | 17. Lock knob             |                             |
| 6. Lower handle       | 12. Height of cut control | 18. Right foot protection |                             |

## 4. ASSEMBLY

---

### Unpacking:

Remove the mower, fixings, tools and other items from the carton.

**⚠ Warning: The mower is heavy. Take care when lifting and handling.**

**⚠ Warning: Ensure that cables are not pinched or damaged whilst removing from the package.**

**⚠ Warning: Remove the battery from the mower to prevent accidents during assembly**

### Assembly of handlebar:

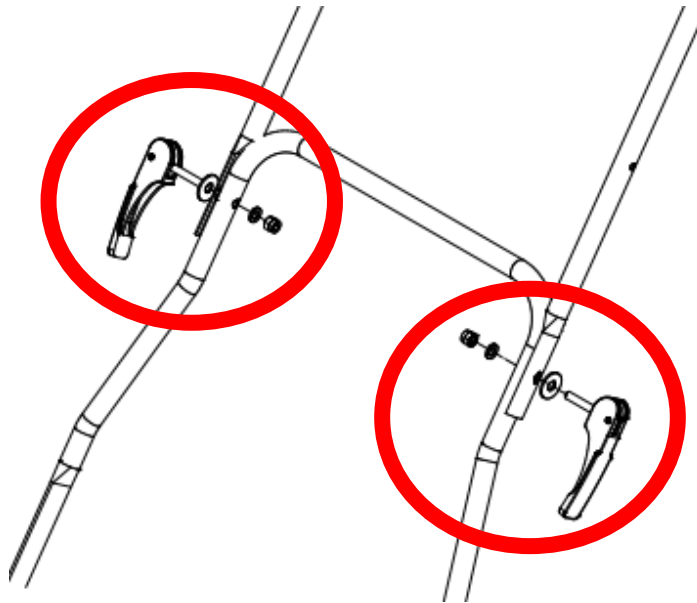
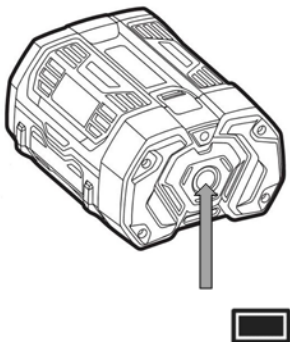


Fig.3

1. Align the upper handle with the lower handle as shown.
2. Fit the quick release lever with one washer on the outside and the other on the inside of the handlebar. Fit the nut.
3. Tighten with a 13mm spanner.
4. Repeat for the other side.









## BATTERIES AND CHARGING

### Checking battery capacity (Fig. 4)





Press the power button on the battery (See Fig.5) to display the charge level or its working condition via the 5 LED indicator. The charge levels are as follows:

Battery charge level / working condition	5-LED indicator	Remarks
80% ≤ Charge level ≤ 100%		5-LED shining green
60% ≤ Charge level < 80%		4-LED shining green
40% ≤ Charge level < 60%		3-LED shining green
20% ≤ Charge level < 40%		2-LED shining green
10% ≤ Charge level < 20%		1-LED shining green
Charge level < 10%		1-LED flashing red
Low voltage		5-LED flashing red The battery pack is nearly depleted and needs to be charged immediately
Over temperature		5-LED shining red Cool the battery pack until the temperature drops below 67°C.

## **Charging the battery**

NOTE: The battery is not shipped fully charged. It is recommended to fully charge before use to ensure that maximum run time can be achieved. This lithium-ion battery will not develop a memory and may be charged at any time. In normal conditions a 5Ah battery (BA2800/BA2800T) can be full charged in approximately 100 mins with the standard charger (CH2100E).

To charge the battery proceed as follows:

Plug the charger into a Mains AC power outlet (220-240V ~ 50Hz)

1. Insert the battery into the charger
2. When the battery pack is charging, the green LED on the charger will flash and the power indicator on the battery will flash.
3. When the battery pack is fully charged, the green LED will stop flashing and will shine green continuously. The power indicator on the battery pack will go out. Wait until the cooling fan stops, remove the battery pack from the charger and disconnect the charger from the power supply.
4. It is good practice to unplug the charger and remove the Lithium-Ion battery pack when not in use.

For further information please refer to the Operator's manual for the battery

## **Usage time**

The area cut and therefore battery duration is dependent on your lawn conditions. Mowing low in wet, dense grass will reduce the run time. To increase battery runtime, it is recommended to:

1. Only take  $\frac{1}{3}$  of the plant height off in a single cut, this will mean mowing frequently at least once per week.
2. Cut when the lawn is dry and ensure debris is removed from the lawn.
3. Keep the blades sharp and regularly serviced. Blunt or damaged blades will decrease battery life.

## **BATTERY AND CHARGER RECOMMENDATIONS**

The charger is for indoor use only

Recharge only with the charger specified by the manufacturer. A charger that is suitable for one type of battery pack may create risk of fire when used with another battery pack.

Use power tools only with specifically designated battery packs. Use of any other battery packs may create risk of injury and fire.

When the battery pack is not in use, keep it away from other metal objects, like paper clips, coins, keys, nails, screws or other small metal objects that can make a connection from one terminal to another. Shorting the battery terminals together may cause burns or a fire.

Under abusive conditions, liquid may be ejected from the battery; avoid contact. If contact accidentally occurs, flush with water. If liquid contacts eyes, additionally seek medical help. Liquid ejected from the battery may cause irritation or burns.

Do not use a battery pack or tool that is damaged or modified. Damaged or modified batteries may exhibit unpredictable behaviour resulting in fire, explosion or risk of injury.

Do not expose a battery pack or tool to fire or excessive temperature. Exposure to fire of temperature above 130°C may cause an explosion.

### **Protective circuit**

The battery includes a protection circuit that will immediately turn off the battery should its temperature exceed 70°C. To warn of this event the power indicator on the mower will shine orange and the LED on the battery will flash. Stop using the mower and wait until the battery cools down to approximately 67°C before restarting the mower.

The mower has built-in overload circuit protection. When the mower is overloaded, the motor will stop and the power indicator on the mower will flash orange. If this occurs, stop using the mower and remove the battery.

Consider making the following adjustments/checks:

- Check the rollers, rake, and cartridge for a build-up of material
- Increase the height of cut to take less material off
- Set the cylinder to bottom blade (reel to bed knife) contact to be lighter
- Reduce the depth of cultivation if using a soil engaging cartridge
- Slow down the forward drive speed

## 5. PREPARING FOR USE

---

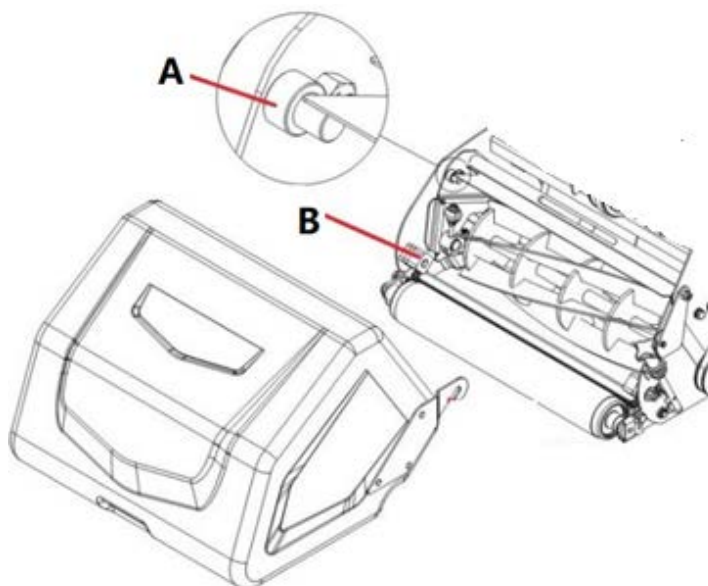
### Check and Tighten Fixings

Before operating the mower inspect all fixings. Check screws, nuts and bolts and tighten as necessary.

### Fit the Grass Collector

Fit catcher by hooking the base of the catcher over the support studs (A) on the body of the mower. The collector rests on the lower supports (B).

Fig. 5

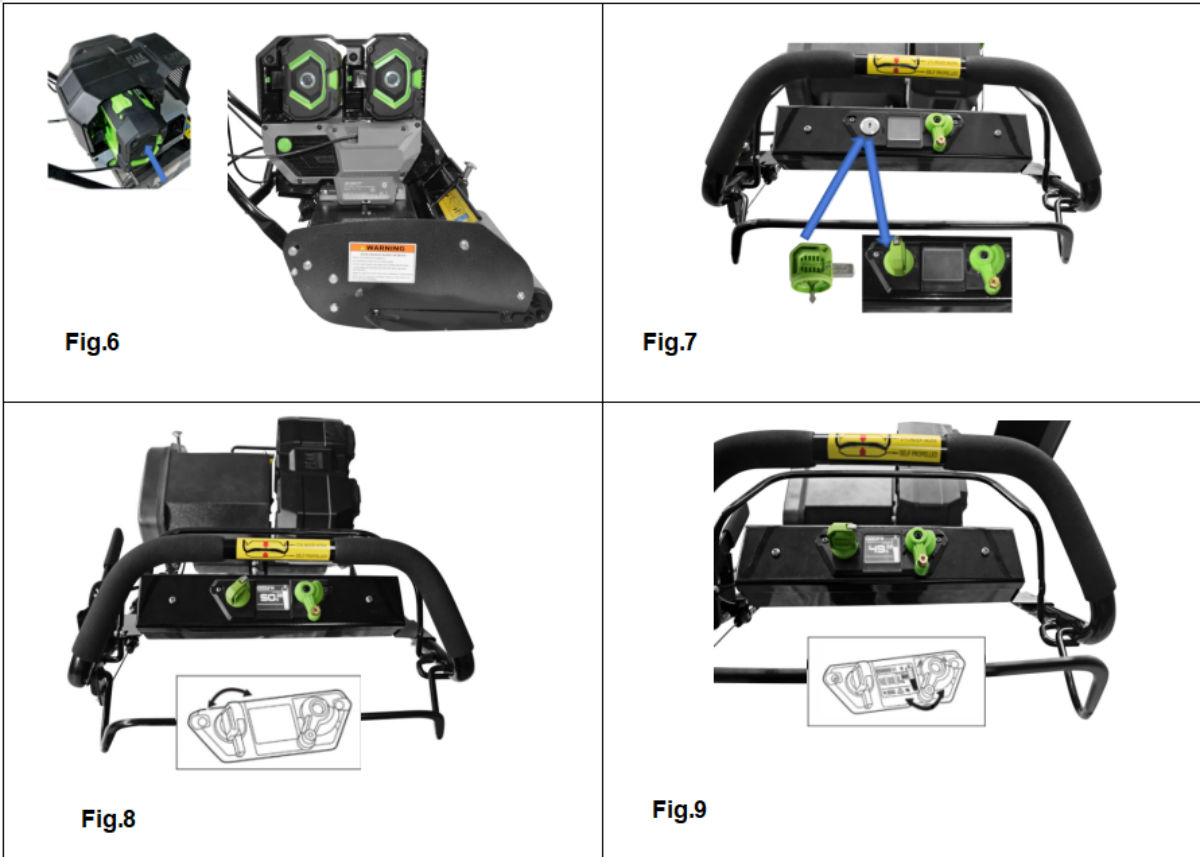


## 6. OPERATION INSTRUCTION

---

### Starting Procedure

1. Align the battery ribs with the guiding slots of the power unit and press the battery pack down until you hear a "CLICK". **Fig.6**
2. There is an OFF/ON/START switch on the LED screen, insert the key into the hole of OFF/ON/START switch. **Fig.7**
3. Put the key into the OFF/ON/START switch slot and turn 45° clockwise to the "ON" position. The power unit will be ready to work as the LED screen and the green light of the battery pack be turned on. **Fig.8**
4. Turn the key 45° clockwise again to the "START" position, the power unit starts to work. **Fig.9**



### **Tilt protection bracket**

The Fortis cylinder mowers incorporates a tilt protection bracket to ensure the safe mower incline angle is not exceeded. **Fig.10**

### **Parking Brake**

The Fortis cylinder mowers feature a parking brake for additional safety. When the mower is stationary for any time always engage the parking brake. **Fig.11**

Never leave the mower unattended without the parking brake being engaged. When storing the mower engage the parking brake.

**Check and where necessary adjust the parking brake to ensure the brake operates correctly.**



**Fig.10**



**Fig.11**

## Lawnmowing Procedure

---

### Preparation

#### **Warning:**

Check the area to be mowed thoroughly to remove debris from the lawn which may be projected from the mower. Stones, twigs, wire, and other debris will damage the cylinder mower.

Operators must be familiar with the controls before taking control of the cylinder mower. Bystanders and animals should be a safe distance away from the mowing area.

Check that the safety controls operate correctly. Check the drive and cutting system disengages when releasing the controls.

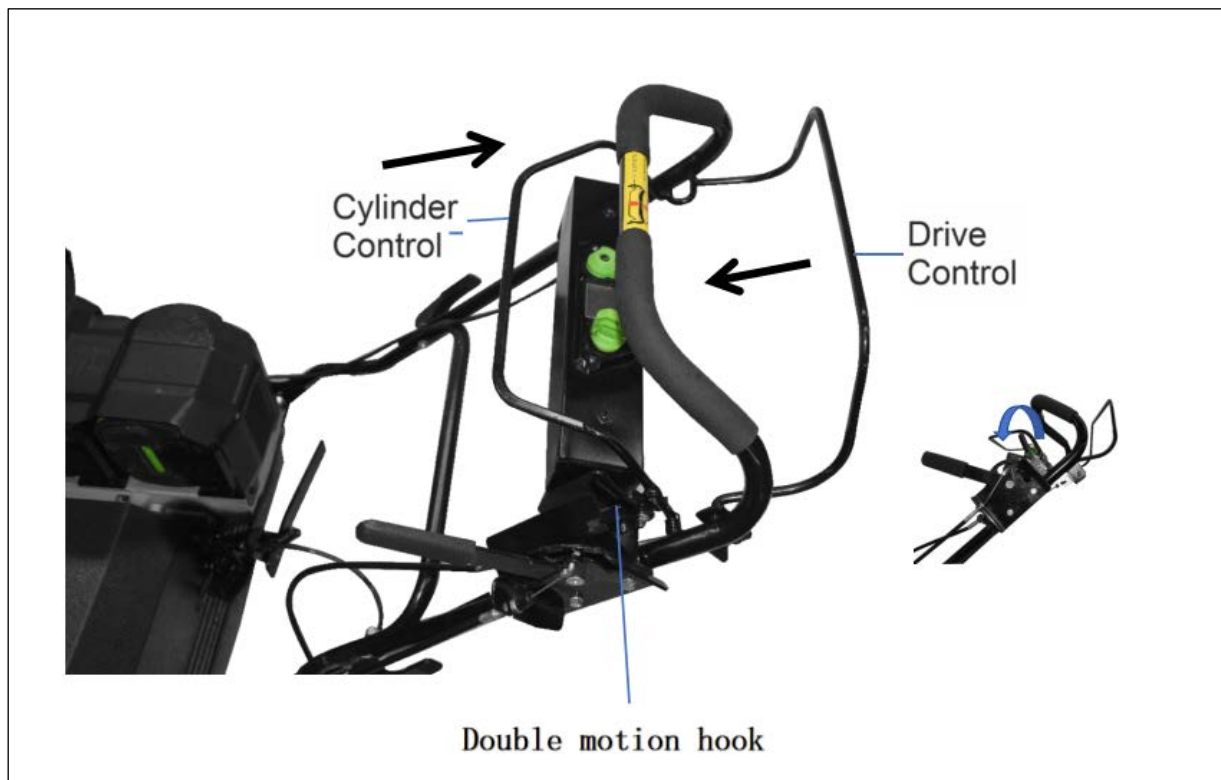


Fig. 12

### Mowing Controls

**Double motion hook (blade safety lever) and Cylinder control lever:**

Push the double motion hook (safety lever) forward to engage the cable of the cutting cylinder control. Then pull the main cylinder control lever back towards the handle bar to start the cutting cylinder. Releasing the cylinder control will cause the double motion hook (safety lever) to return back to the original position. The cutting cylinder will stop.

#### **Warning: The blades continue to rotate after disengaging**

**Drive control lever:**

Engage the power drive by moving the lever slowly towards the handle bar. The cylinder mower will start to move forwards. Release the drive control lever and the mower will stop.

## How to Stop the cylinder mower

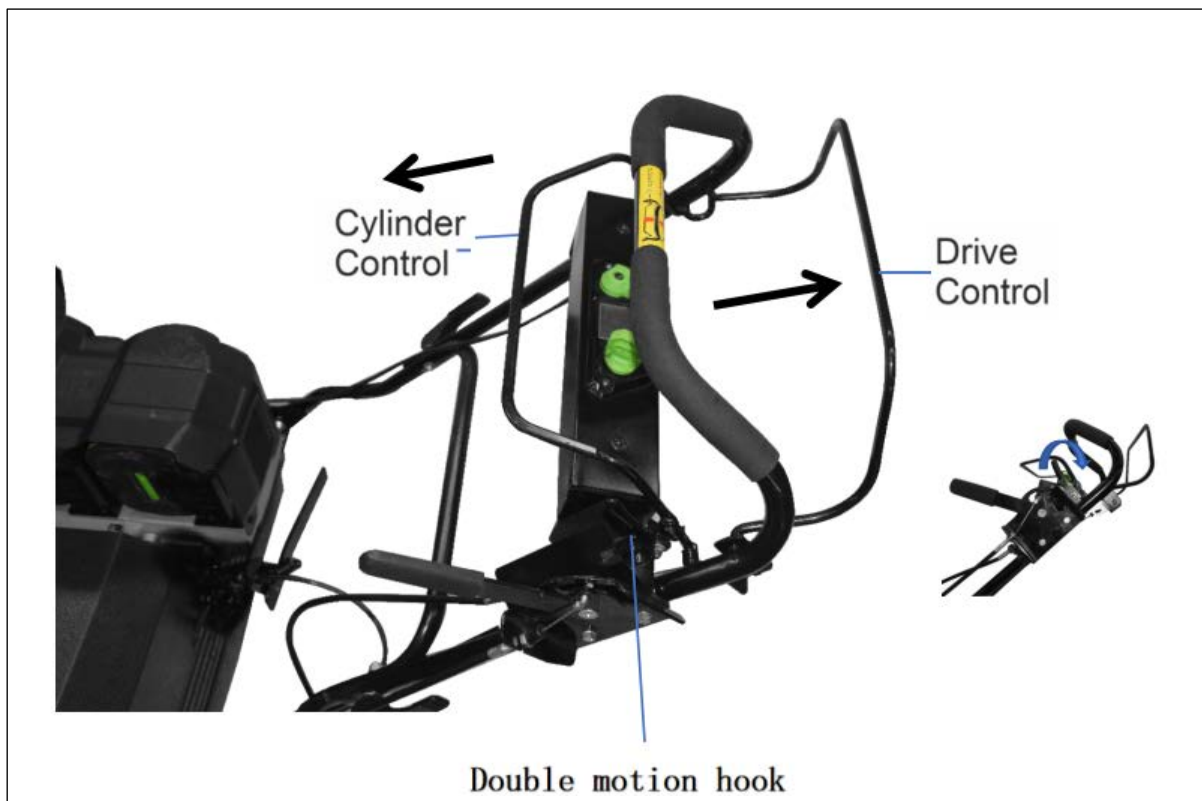


Fig. 13

**⚠ Warning:** The blade and drive will not stop immediately.

In the case of an emergency 'STOP' release both the cutting cylinder and drive control levers, the double motion hook (safety lever) will return back to the starting position. The motor of the power unit will continue to run but the cutting cylinder and power drive will stop.

### Fitting and Emptying the Grass Collector

**⚠ Warning:** Turn the mower off before fitting or emptying the collector.

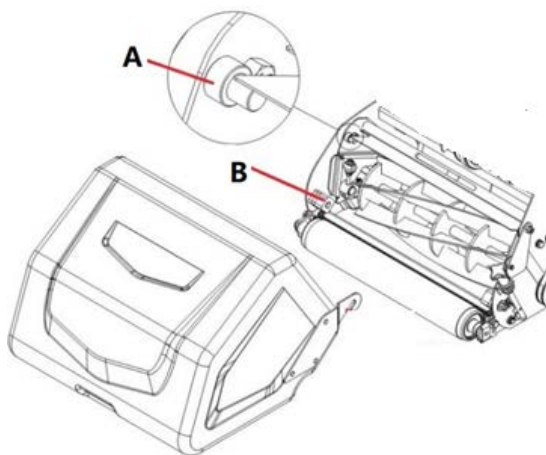


Fig. 14



1. Ensure the mower is stopped prior to removing or refitting the grass collector.
2. The grass collector is fitted by holding the top of the box and hooking the bottom section to the locating pegs (A), the catcher then sits on the rubber stops (B) either side of the chassis.
3. To remove the catcher, disengage the blade driver lever and stop the mower
4. Lift the catcher from the top section and empty.

### Changing the Height of Cut

---

**⚠ Warning: Switch off the power unit before making any adjustments of maintenance.**



**Fig. 15**



**Fig. 16**

The height of cut is adjusted by turning the height control. The scale marked provides a guide to the cutting height set in mm. The height of cut operates by moving the position of the roller relative to the bottom blade.

- Turn the control knob clockwise to raise the cutting height.
- Turn the control knob anti-clockwise to lower the cutting height.

The 'L' marked are the scale indicates 'Low' for use with specific cartridge cassettes requiring the lowest operating height.

### Left & right foot protection

---

The foot protection guard, automatically adjusts the gap between the lower edge of foot protection and the ground to ensure a gap of less than 35mm is maintained at all heights of cut.

### Cylinder to Bottom Blade Gap Adjustment

---

**⚠ Warning: Switch off the power unit before making any adjustments of maintenance. Wear safety gloves to protect against cuts from the blades.**

The Fortis cylinder mower cutting system is designed for efficient and precise cutting. To maintain the cutting precision follow the instructions below. The cylinder blade should always cut cleanly and evenly when set correctly. The blades are a wearing item and as such will need periodic sharpening to maintain the cut precision.

1. Switch the power unit off
2. Tilt the mower backwards towards the handles. Please ensure that the mower is not tilted back for extensive periods of time.

The cylinder blades should be adjusted so that they lightly touch the bottom blade i.e. (Scissor

contact). Test with standard 80gsm paper at several positions across the bottom blade to ensure it is adjusted correctly across the width of the blade. Ideally use 1" width strips of paper. Place the test paper between the cylinder and the bottom blade. The paper should cut cleanly along the length of the cylinder on each blade and the cylinder should rotate easily by hand.

To adjust the gap between the cylinder and the bottom blade, wearing safety gloves:

1. Loosen the bolt on both sides of mower. Refer to red circles on [Fig. 17](#) & [Fig. 20](#).
2. Loosen nuts on the bottom of the adjustment screw. Refer to red circle on [Fig. 18](#) & [Fig. 21](#).
3. Turn the adjustment screw on both sides, so the cylinder blade to make contact with the bottom blade. The blade must only 'just' make contact, whilst still allowing it to rotate freely. Refer to red circles [Fig. 19](#) & [Fig. 22](#).
4. Re-tight nuts. [Fig. 18](#) & [Fig. 21](#).
5. Re-tighten bolts. [Fig. 17](#) & [Fig. 20](#).
6. Test the cutting action with paper as previously described. Should the paper not cut satisfactorily, the cylinder may need to be sharpened. Contact your local Cobra dealer.



Fig. 17  
Fig. 20

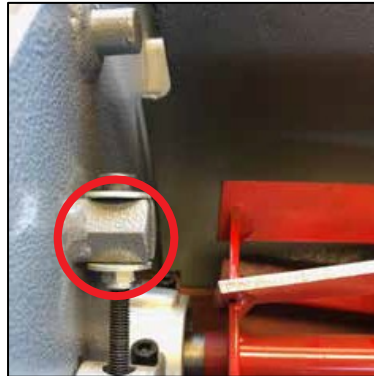


Fig. 18  
Fig. 21

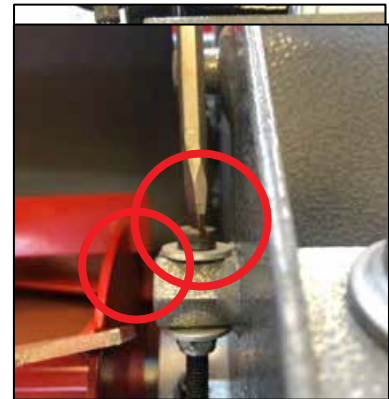


Fig. 19  
Fig. 22

### Cylinder Blade Drive Belt Control Adjustment

**⚠ Warning: Switch off the power unit before making any adjustments of maintenance.**

Following the adjustment to the blade settings, or as a regular maintenance procedure, the adjustment control should be checked and adjusted from time to time.

1. Remove side cover screws. Refer to red circles. [Fig. 23](#)
2. Loosen lock nut. Refer to red circle. [Fig. 24](#).
3. Adjust the cable tension until there is a 5-6mm up and down movement in the belt. Refer to red arrow. [Fig. 25](#)

4. Re-tighten the lock nut. Fig. 24.
5. Refit the side cover and secure with the two screws. Fig. 23.



Fig. 23

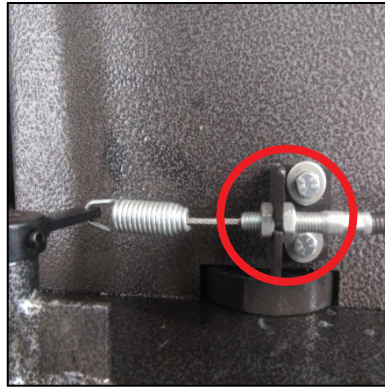


Fig. 24

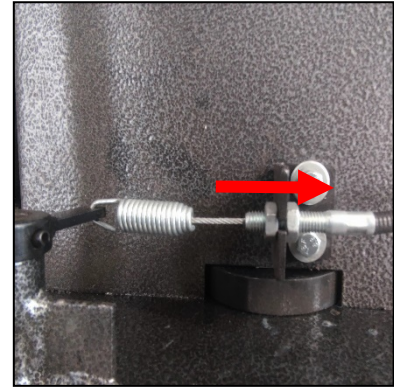


Fig. 25

### Drive Control Adjustment

**⚠ Warning: Switch off the power unit before making any adjustments of maintenance.**

The drive control lever mechanism is adjustable to apply more or less tension on the drive belt.

1. Access the drive control cable adjustment by removing the two screws of the side cover Fig. 23.
2. Loosen the two lock nuts. Refer to red circles Fig. 26.
3. Slide the long bolt upwards until the belt has 1-2mm up and down movement.
4. Tighten the lock nuts. Fig. 26. Refit the side cover with the two screws Fig. 23.

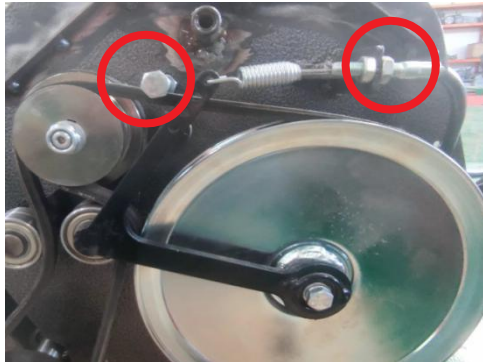


Fig.26

## Handle Position Adjustment

---



Fig. 27

Fig. 28

Fig. 29

The height of the handles may be adjusted to suit the operator.

At the lower section of the handle, the securing bolts should be loosened to adjust the angle of the handles. The side cover should be removed to access the two bolts on this side.

Once the required height is set, secure the bolts on each side. Refit the side cover with the two bolts.

## Lubrication and Maintenance

---

**⚠ Warning: Switch off the power unit before making any adjustments of maintenance.**

### Lubrication Points



Fig. 30

Regular maintenance is essential to keep your cylinder mower performing optimally and ensure it operates safely. Routine lubrication of the following is required:

1. Height of cut adjuster knob – apply oil to the shaft. Fig. 30
2. The inner shaft of the front roller. Lubricate with oil. Fig. 30

## 7. SAFETY CHECKS, SERVICE & MAINTENANCE

---

**⚠ Warning: Complete safety checks regularly. Read the mower manual.**

Before starting to use the cylinder mower complete safety checks, including checking guards, controls operate correctly (blade and drive stop when levers are released). Check the parking brake where fitted. Check fixings are secure.

Clean the cylinder mower with a cloth. Remove grass and dirt from the mower, but paying particular attention to bearings, pulleys and moving parts. Do not hose or pressure washer the cylinder mower.

The cylinder mower must be serviced regularly. For normal homeowner use, the cylinder mower should be serviced by a Cobra service dealer annually, however where the cylinder mower is used more frequently ensure the cylinder mower is serviced more regularly.

## 8. CHANGING THE CARTRIDGE CASSETTE

---

**⚠ Warning: Switch off the power unit before making any adjustments of maintenance. Engage the parking brake where fitted.**

The Fortis lawncare system has a total of 7 different cartridges, including the standard 6 bladed cutting cartridge provided with the cylinder mower.

Lawncare professionals know that a beautiful lawn requires the right tools to maintain and cultivate the quality of the turf. Easily switch your cylinder mower to scarify, dethatch, brush, verticut, and aerate. The 10 bladed cartridge is the ideal option for the finest lawns or professional sports playing greens and pitches.

**Aerator Cartridge**



**Brush Cartridge**



**Verticut Cartridge**



**Dethatcher Cartridge**



**10BI Cartridge**



**Scarifier Cartridge**

## Removing and Fitting the Fortis Cartridge

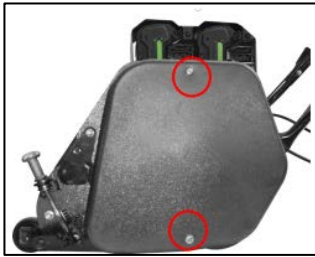


Fig. 31



Fig. 32

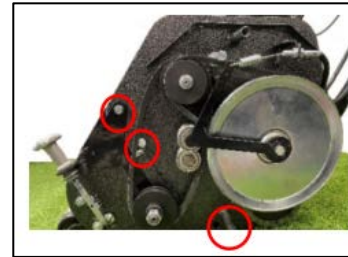


Fig. 33

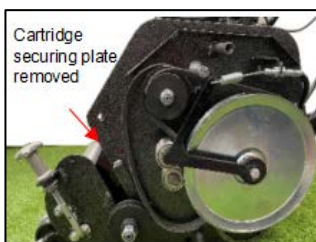


Fig. 34



Fig. 35



Fig. 36

### Removing the cartridge

1. Remove the side cover, unscrewing the 2 bolts highlighted in the red circle. **Fig.31**
2. On the other side of the mower, remove the bolts securing the cartridge which is highlighted in **Fig.32**.
3. Remove the 2 bolts from the pulley and belt side of the mower. These are highlighted in **Fig. 33**, remove the securing plate that holds the cartridge in place.
4. Carefully remove the belt from the cartridge pulley. **Fig.34** shows the belt removed from the cartridge pulley.
5. Remove the cartridge carefully, keeping the unit square and lifting out by holding the handles of the cartridge.

### Fitting the Cartridge

1. With the cartridge slot empty, as shown in **Fig.35**, present the cartridge to the mower such that the cartridge pulley is the side with the mower belts and pulleys. The cartridge shaft should be aligned with the slot shown in **Fig. 33** showing the cartridge pulley in the located position.
2. Lower the cartridge in place keeping the cartridge sides parallel to the mower sides. Rotate the cartridge, so that the locating notch (**Fig. 36**) of the cartridge fits to the cartridge locating shaft in **Fig.35**.
3. Attach the cartridge belt, **Fig. 33**, fit the securing plate with the bolt. Fit the other bolt highlighted in **Fig. 33**.
4. Refit the side cover with the 2 bolts. **Fig.31**
5. On the opposite side of the mower, fit the cartridge bolt as shown in **Fig.32**.

**Note: If required, add a small amount of lubrication to the sides of the cartridge to assist installing.**

## 9. FAULT DIAGNOSIS & REMEDY

**⚠ Warning: Switch off the power unit before making any adjustments of maintenance.**

	Possible Cause	Remedy
Grass is not cleanly cut or grass is ripped.	The cylinder to bottom blade gap is incorrect.	Check and adjust the gap. Check and sharpen the cylinder if necessary.
The cut is not consistent. Some areas are not cut correctly.	The cylinder to bottom blade gap is not 'on-cut' across the whole blade. The blade system is damaged.	Check and adjust the gap. Check and sharpen the cylinder if necessary. Damaged – see a Cobra dealer
Power unit starting issues.	Battery not located correctly Battery charge is too low LED issue	Refit the battery Fully charge the battery Check the LED screen
Power unit stops running	Battery charge is too low Power unit fault Cutting cylinder obstructed	Charge the battery fully Reset the power unit, switch off and on Turn off the power unit and clear obstruction. Switch off first. Please refer to maintenance manual.
Cutting cylinder does not rotate	Cutting cylinder obstructed Cylinder adjustment incorrect	Remove obstruction. Adjust the cylinder bottom blade gap.
Power drive does not work	Incorrect adjustment/cable damaged	Adjust the drive cable so that the drive operates.
Excessive vibration or noise	Blade system or other mower part damaged Power unit issue	Contact the local Cobra dealer  Check the power unit

## 10. TECHNICAL DATA

Model	Fortis 14E	Fortis 17E	Fortis 20E	Fortis 25E	Fortis 20FTE	Fortis 25FTE
Power Unit	EGO Horizontal Shaft Power Unit					
Net Power Output	2.38kW @2800 RPM / 2.82kW @3000 RPM					
	3.03kW @3200 RPM / 3.47kW @3450 RPM					
Starting Key	OFF/ON/START					
Speed Control	1200-3600 RPM					
Lithium Battery	56V/2.5Ah	56V/5.0Ah	56V/7.5Ah	56V/12Ah	56V/7.5Ah	56V/12Ah
LCD Display	1.Total running hours; 2.Battery remaining and slot status; 3. Speed bar					
Blade Width	14in (36cm)	17in (43cm)	20in (51cm)	25in (63cm)	20in (51cm)	25in (63cm)
Self-Propelled	Yes					
Height adjustment:	6mm to 30mm with 6 Bladed Cartridge. As low as 3mm with the opt. 10 Blade				3mm to 30mm with 10 Bladed Cartridge.	
IP Rating	IPX5					
Grass Catcher	55L	65L	75L	90L	75L	90L
Grass Catcher	3.7kg	4.3kg	4.6kg	6.2kg	4.6kg	6.2kg
Net Weight	72.7kg	84.1kg	90.5kg	98.5kg	103.1kg	109.1kg
Package Size	1020x630x645	1020x690x645	1020x770x645	1020x900x645	1020x770x645	1020x900x645

## **11. WARRANTY**

---

This product is warranted in accordance with legal regulations for a 24 month period effective from the date of purchase by the first user when used by domestic users. Where the cylinder mower is used by a professional user the warranty period will be 12 months from the date of purchase.

The intended use is fine domestic lawn maintenance and fine sports turf lawns.

This warranty covers all material or production failures, it does not include: defects from normal wear and tear, parts such as, bearings, brushes, cables, air cleaning elements, brake pad, clutch disc, tyre, wheel, belts, cutter blades, plugs, grease or accessories. Damage or defects resulting from abuse, accidents or alterations, natural fading of painted or plated surfaces, sheet peeling and other natural deterioration.

Any damage that occurs from the use of non-genuine Cobra parts will not be covered.

We reserve the right to reject any claim where the purchase cannot be verified or when it is clear that the product was not maintained properly. (Clean ventilation slots, carbon brushes and serviced regularly)

Expenses incidental to the warranty claim that are not covered;

-Compensation for loss of time, commercial loss or rental costs of substitute product.

-Costs incurred for transportation to and from the dealership.

Any damage that occurs from the following will not be covered; exposure of the product to smoke and soot, chemical agents, bird droppings or other animal waste, seawater, sea breeze, salt or other environmental phenomena.

Any damage resulting from operating methods other than those indicated in the owner's manual will not be covered.

Your purchase receipt must be kept as proof for date of purchase. Your un-dismantled mower must be returned to your dealer in an acceptably clean state, accompanied by your proof of purchase.

Please Register Your Mower

If your dealer did not collect registration information from you, please take a few minutes and register your purchase with Cobra.

You can register by going online to [www.cobragarden.co.uk](http://www.cobragarden.co.uk) and clicking on Product Registration.

Before using the lawn mower, all mower operators must read this manual.

### **Environment**


---

Should your machine need replacement after extended use, do not put it in the domestic waste but dispose of it in an environmentally safe way.





## 12. EC DECLARATION OF CONFORMITY

EC Declaration of Conformity	
We herewith declare,	Cobra Garden Machinery Henton & Chattell Ltd, London Road, Nottingham NG2 3HW UK
That the following machine complies with the appropriate basic safety and health requirements of the EC Directive based on its design and type, as brought into circulation by us.	
In case of alteration of the machine, not agreed upon by us, this declaration will lose its validity	
Product	Cordless Multi-function Garden Tool (combined cylinder lawnmower, lawn aerator, lawn scarifier and lawn brush)
Machine Type:	Fortis 14E, 17E, 20E, 20FTE, 25E, 25FTE
Rated voltage/power	56VDC
Measured sound power level:	14E 92.31 dB(A), 17E 90.46dB(A), 20E 95.00 dB(A), 20FTE 95.62 dB(A), 25E 93.50 dB(A), 25FTE 95.46 dB(A)
Guaranteed sound power level:	14E and 17E 96 dB(A) 20E, 20FTE, 25E, 25FTE 98dB(A)  Notified Body for EC Directive 2000/14/EC amended by 2005/88/EC  TÜV Rheinland LGA Products GmbH  Tillystraße 2, D-90431 Nürnberg Germany
Applicable EC Directives:	2006/42/EC, 2014/53/EU., 2000/14/EC, 2011/65/EU
Applicable Standards:	Harmonized EN ISO 12100:2010, EN 62841-1:2015+A11, EN IEC 62841-4-3:2021+A11, EN IEC 62841-4-7:2022+A11, EN IEC 55014-1:2021, EN IEC 55014-2:2021; EN 300328 V 2.2.2:2019; EN 301489-1 V 2.2.3:2019; EN 301489-17 V 3.2.4:2020; EN 50663:2017
Authorised Signature/Date/Place:	  12/03/2023
Title of Signatory:	Managing Director
Name and address of the person authorised to compile the technical file	Cobra Garden Machinery, Henton & Chattell Ltd, London Road, Nottingham NG2 3HW UK

